



ANTEGRADE ACCESS DESPITE OSTIAL SFA OCCLUSION



LOW PULSE IN LEFT CFA





LOW PULSE IN LEFT CFA



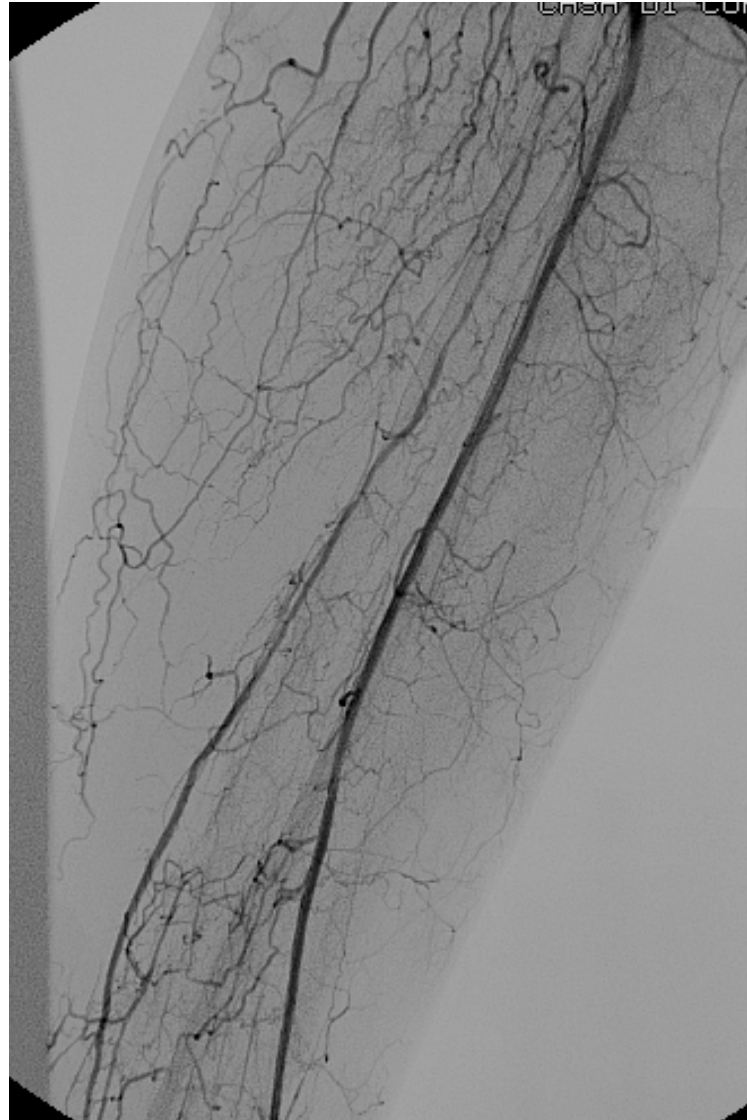


BTK DISEASE





BTK DISEASE





BTK DISEASE



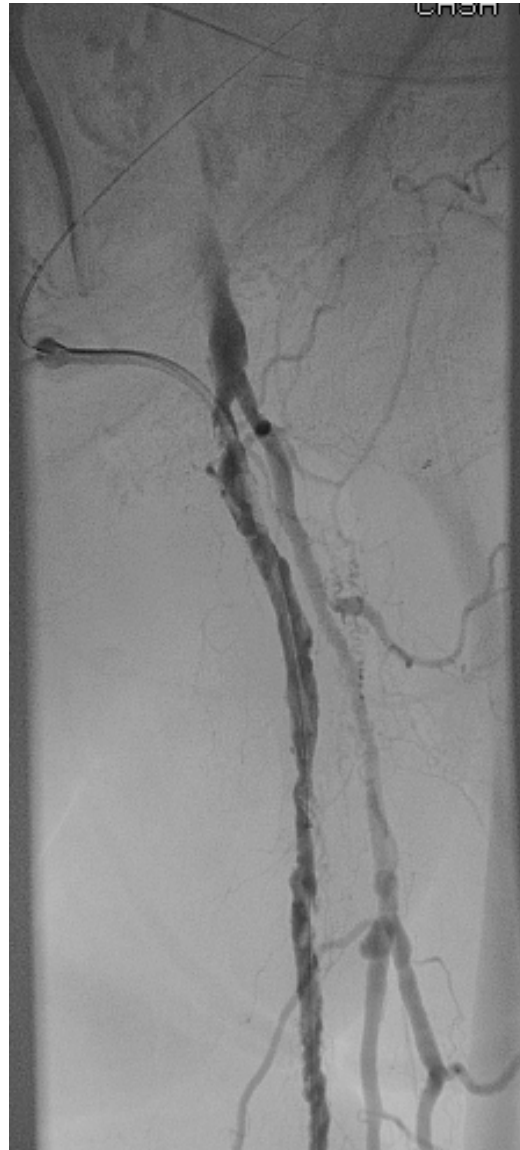


NONETHELESS ANTEGRADE PUNCTURE AND IMMEDIATE RECANALIZATION WITH 0.035 WIRE BECAUSE OF DUS EVIDENCE OF BTK DISEASE





6 FR SHEATH IN CFA/SFA





BALLOON IN CFA/SFA



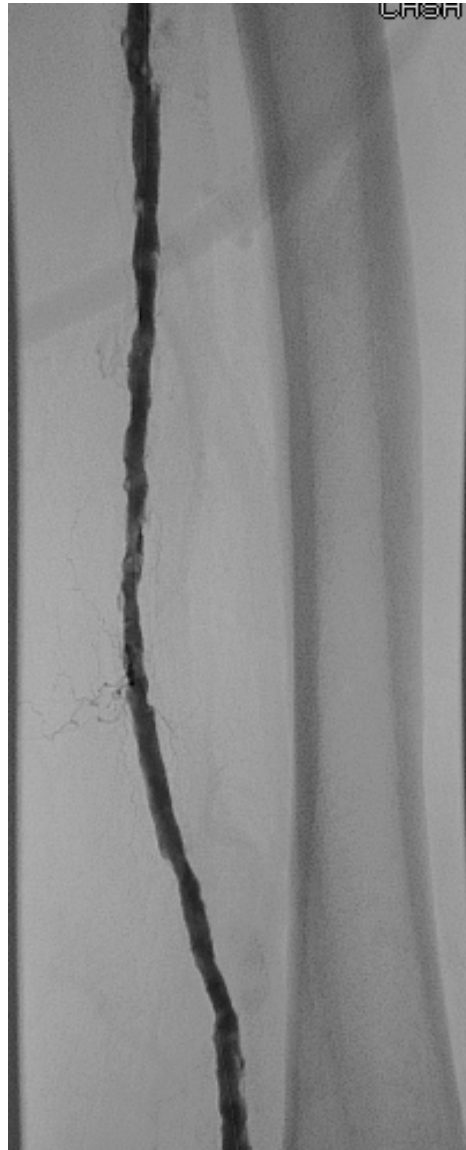


FINAL RESULT



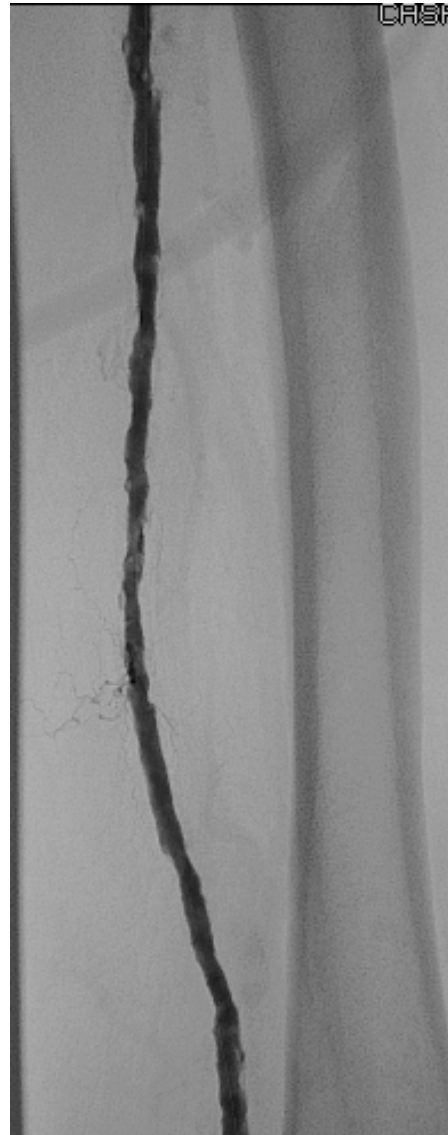


FINAL RESULT





FINAL RESULT





FINAL RESULT

